

ACAP3 Antibody (C-term)
Purified Rabbit Polyclonal Antibody (Pab)
Catalog # AP20717c**Specification**

ACAP3 Antibody (C-term) - Product Information

Application	WB, E
Primary Accession	Q96P50
Reactivity	Human
Host	Rabbit
Clonality	Polyclonal
Isotype	Rabbit IgG
Calculated MW	92495

ACAP3 Antibody (C-term) - Additional Information**Gene ID** 116983**Other Names**

Arf-GAP with coiled-coil, ANK repeat and PH domain-containing protein 3, Centaurin-beta-5, Cnt-b5, ACAP3, CENTB5, KIAA1716

Target/Specificity

This ACAP3 antibody is generated from a rabbit immunized with a KLH conjugated synthetic peptide between 759-792 amino acids from the C-terminal region of human ACAP3.

Dilution

WB~~1:1000

E~~Use at an assay dependent concentration.

Format

Purified polyclonal antibody supplied in PBS with 0.09% (W/V) sodium azide. This antibody is purified through a protein A column, followed by peptide affinity purification.

Storage

Maintain refrigerated at 2-8°C for up to 2 weeks. For long term storage store at -20°C in small aliquots to prevent freeze-thaw cycles.

Precautions

ACAP3 Antibody (C-term) is for research use only and not for use in diagnostic or therapeutic procedures.

ACAP3 Antibody (C-term) - Protein Information**Name** ACAP3**Synonyms** CENTB5, KIAA1716

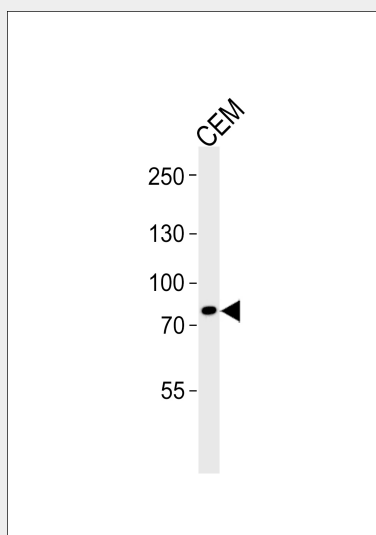
Function GTPase-activating protein for the ADP ribosylation factor family.

ACAP3 Antibody (C-term) - Protocols

Provided below are standard protocols that you may find useful for product applications.

- [Western Blot](#)
- [Blocking Peptides](#)
- [Dot Blot](#)
- [Immunohistochemistry](#)
- [Immunofluorescence](#)
- [Immunoprecipitation](#)
- [Flow Cytometry](#)
- [Cell Culture](#)

ACAP3 Antibody (C-term) - Images



Western blot analysis of lysate from CEM cell line, using ACAP3 Antibody (C-term)(Cat. #AP20717c). AP20717c was diluted at 1:1000. A goat anti-rabbit IgG H&L(HRP) at 1:5000 dilution was used as the secondary antibody. Lysate at 35ug.

ACAP3 Antibody (C-term) - Background

GTPase-activating protein for the ADP ribosylation factor family (Potential).

ACAP3 Antibody (C-term) - References

Hong W.,et al.Submitted (AUG-2001) to the EMBL/GenBank/DDBJ databases.
Nagase T.,et al.DNA Res. 7:347-355(2000).
Gregory S.G.,et al.Nature 441:315-321(2006).
Mural R.J.,et al.Submitted (JUL-2005) to the EMBL/GenBank/DDBJ databases.
Beausoleil S.A.,et al.Nat. Biotechnol. 24:1285-1292(2006).